

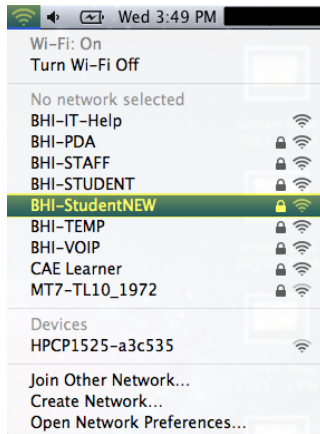
Student Wireless - iMac

SSID: BHI-STUDENTNEW

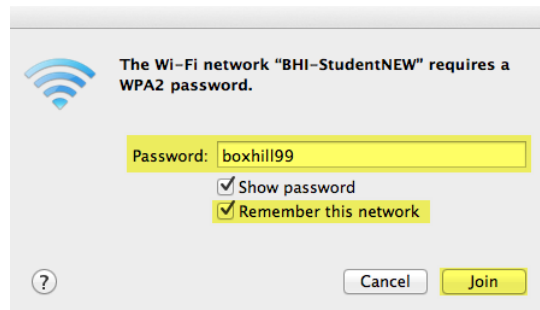
PASSWORD: boxhill99

PROXY: <http://proxy.bhi/>

- 1) From the **task bar**, click on the **wireless icon**
- 2) Click on **BHI-StudentNEW**



- 3) In the **Password** text box, enter **boxhill99** and tick **Remember this network**



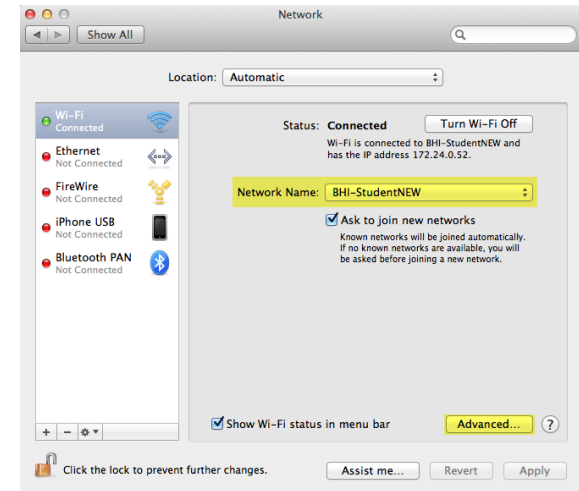
- 4) Click **Join**
- 5) From the **Dock**, open **System Preferences**



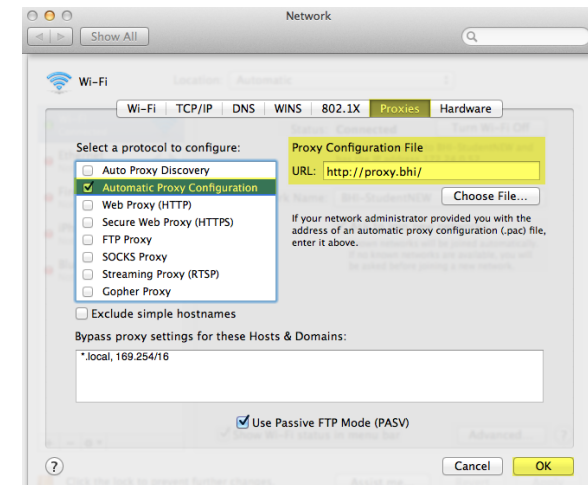
- 6) Click on **Network**



- 7) Ensure **Network Name** is **BHI-StudentNEW** and click **Advanced**



- 8) Click on the **Proxies** tab and select **Automatic Proxy Configuration**
- 9) In the **Proxy Configuration File** text box, enter **<http://proxy.bhi/>** and click **OK**



For further help and advice contact the IT Service Desk

Mon - Fri: 8:00 AM - 6:00 PM (excluding public holidays)

9286 9465

StudentITSupport@boxhill.edu.au